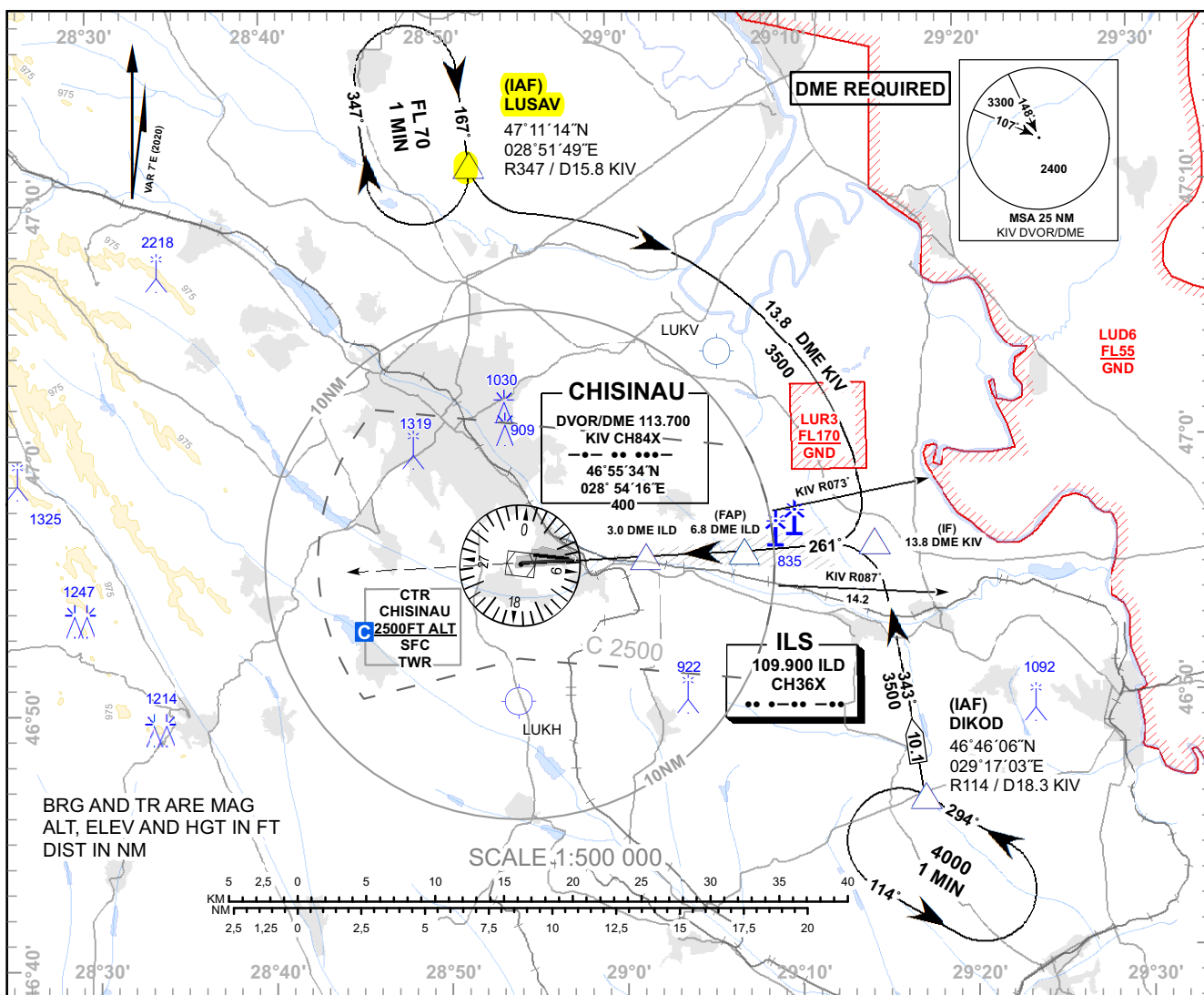


INSTRUMENT APPROACH CHART - ICAO

AD ELEV 399 FT
HEIGHTS RELATED TO
THR RWY 26 ELEV 280 FT

APP: 133.300 MHz
TWR: 118.100 MHz
ATIS: 125.225 MHz

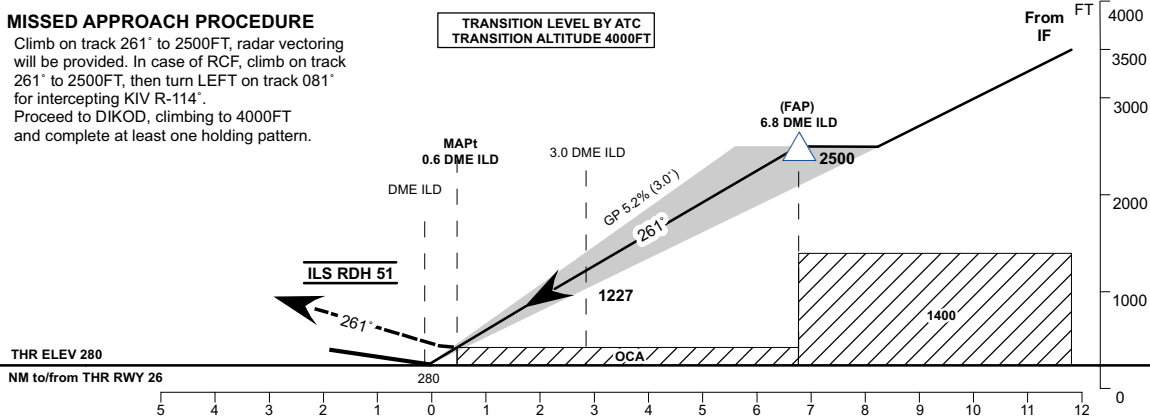
CHISINAU/Int'l (LUKK)
ILS CAT I RWY 26



MISSED APPROACH PROCEDURE

Climb on track 261° to 2500FT, radar vectoring will be provided. In case of RCF, climb on track 261° to 2500FT, then turn LEFT on track 081° for intercepting KIV R-114°. Proceed to DIKOD, climbing to 4000FT and complete at least one holding pattern.

TRANSITION LEVEL BY ATC
TRANSITION ALTITUDE 4000FT



OCA (OCH)	A	B	C	D
ILS CAT I	456 (177)	468 (189)	476 (197)	487 (208)

DME ILD	7	6	5	4	3	2	1
DIST THR	6.8	5.8	4.8	3.8	2.8	1.8	0.8
ALTITUDE (Height)	2500 (2220)	2178 (1898)	1859 (1579)	1541 (1261)	1223 (943)	904 (624)	586 (306)

Timing not Authorized for Defining the MAPt

GS	kt	80	100	120	140	160	180
DISTANCE FAP- MAPt 6.2NM	MIN:SEC	4:39	3:43	3:06	2:39	2:20	2:04
Rate of Descent (5.2%)	FT/MIN	425	531	637	743	849	955

Changes: Tables Rate of Descent and Altitude Corrected.

INSTRUMENT APPROACH
CHART - ICAO

CHISINAU/Intl (LUKK)
ILS CAT I RWY 26

AERONAUTICAL DATA TABULATION				
POINT	LATITUDE	LONGITUDE	BEARING GEO° (MAG°)	DISTANCE (NM)
IAF LUSAV	471114.0N	0285149.0E	354.00° (347°) KIV	15.80 KIV
IAF DIKOD	464606.0N	0291703.0E	121.00° (114°) KIV	18.28 KIV
IF	465600.9N	0291423.8E	268.24° (261°) KIV	13.81 DME KIV
FAP	465553.0N	0290701.7E	268.33° (261°) ILD	6.83 DME ILD
MAPt	465542.6N	0285759.1E	268.33° (261°) ILD	0.63 DME ILD